



MANAFETH

AMBULANCE
&
HANDICAP VEHICLES



Wellbeing On
Wheels

From the CEO's Desk

"When we founded Manafeth in 2004, we based our decisions on the needs and requirements of the market. Since then, we built products and services that have met our customer's expectations. Times have changed, yet the fundamentals have not. We are still listening to the customer and building solutions around their needs.

*Based on critical marketing and product development insights, our Creative Design Department has designed newer vehicles as per the market demands. We have developed three new vehicles, viz. the **Mobile Hospital**, the **Military Clinic Cabinet** and the **Military Ambulance**.*

*Along with these, the company has also forayed into the **Handicap Vehicles segment**, offering advanced technology, and meeting international standards. Of course, we continue to be the leading manufacturer of ambulances and rescue vehicles in the region."*

Dr. Abdullah Al-Meheini
CEO



Company Overview

Founded in 2004, Manafeth Ambulance and Handicap Vehicles (MAHV) is a celebrated name in the field of ambulance manufacturing in the Gulf countries. Manafeth was established by the Saudi Red Crescent Society, the National Emergency Vehicles (NEV) Inc. and other investors.

Together we have set up an excellent facility for manufacturing ambulances, rescue vehicles and specialty vehicles. We have recently launched a range of handicap vehicles and mobile hospitals for the civil and military applications.

Through technical knowhow and marketing inputs from NEV, Manafeth has grown from strength-to-strength to establish cutting-edge machinery and product development capabilities. Over the years, Manafeth has gained excellent market share in the segment and commissioned **over 1100 vehicles** to various government agencies and hospitals. We have entered into several strategic contracts with esteemed clients in the region.



Vision & Mission

Vision

To become a world leader in designing and manufacturing technologically advanced and high-quality ambulances and specialty vehicles.

Mission

Continuous improvement and innovation to offer the most cutting-edge products, services and after-sales services in the Middle East.

Objective

To produce high-quality ambulances, and specialty vehicles to help save precious lives and serve critical needs.



Types of Vehicles

Ambulances

Type I



This is a modular ambulance built on a truck chassis. A key advantage to the Type I is that the module can be remounted on a new chassis when the initial chassis is worn out. It is a cab and chassis customized modular ambulance that is designed to provide more space inside, while having exterior compartments for storage of generators, oxygen cylinders and other specialty equipment.



Type II



This is an urban response ambulance using a van-type chassis. The remarkable modifications of the van are the addition of a metal rollover safety cage and reinforcement of the interior walls, and then interior headroom is raised by adding cold formed rollover-cage system that is topped with insulated fiberglass. This type can be equipped either with efficient Advance Life Support (ALS) or Basic Life Support medical equipment.

This is a modular ambulance built on a truck chassis. Type III features a walkthrough bulkhead, allowing for passage between patient compartment and cab. The conversion can be remounted and be installed with similar medical equipment.



Type III



Rescue Vehicles



Manafeth has recently forayed into the segment of rescue vehicles. Staying with its mission to offer the best technology in specialty vehicles, Manafeth has launched two variants that employ cutting-edge technology.

These **Light Duty Rescue Vehicles** and **Medium Duty Rescue Vehicles** can be equipped with "Tool-Boxes" or medium Duty "Walkin". Each unit is custom-made to meet the customer's requirements.

Handicap Vehicles



Manafeth has extensive experience in vehicle modification and installation. This allows us to manufacture a new range of highly sophisticated and user-friendly handicap vehicles, customized as per client's requirements.

We have designed a variety of equipment for the physically challenged. We take pride for being able to harness technology for creating and delivering adaptive driving equipment of our differentially abled customers.

Adaptive Equipment Available:

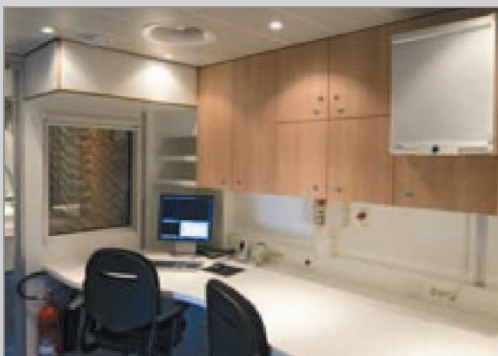
- Assistive Seating and Steps
- Gas and Brake Pedal Extensions
- Gear Shift and Park Brake Extensions
- Hand Controls
- Left Foot Gas Pedals
- Portable Ramps
- Spinner Knobs
- Transfer Seats
- Electro hydraulic wheel chair and scooter lifters
- Wheelchair/ Scooter Securement Systems

Mobile Hospital



Manafeth brings to you, state-of-the-art mobile hospital solutions that offer maximum flexibility. These specially designed units offer facilities such as X-ray, laboratory, diagnostics and recovery rooms. The capacity of the installed equipment can be customized to meet the number patients.

Every unit is fully equipped with end-to-end facilities as per requirements. Every mobile hospital can be operated as an individual hospital, catering to specific regions allowing you cover larger areas with lesser resources, for offering economic and flexible mobile healthcare solutions.



Our designs include:

- Technical rooms for MRI-related components
- Control rooms
- Examination rooms

All the facilities meet international standards in quality, and ergonomics.

Military Clinic Cabinet



Manafeth works closely with its consultants, designers and engineers to manufacture ambulances and mobile clinics for military usage. These sophisticated vehicles offer truly mobile medical facilities - at the treatment center and on the field.

The Military Clinic Cabinets are equipped to offer a wide variety of examinations and treatments - from general examinations to advanced surgery.

Each unit provides facilities like:

- Examination room
- OR rooms
- Diagnostic equipment like X-ray, MRI or CT scanners
- Water and power supply
- Management functions
- ICU capacity and pharmacy

These vehicles are designed to be operated by a small staff, working at remote locations and using minimal resources, ideal solution for military applications.

Military Ambulance



Through its extensive experience and expertise in manufacturing ambulances and rescue vehicles, Manafeth has successfully designed and commissioned state-of-the-art military ambulances. These vehicles are completely customizable and engineered as per international guidelines for safety, applicability, ergonomics and ease of usage.

Some of the features of these vehicles are:

- Armored designs
- Patient-friendly access (hydraulically operated rear ramp)
- Air conditioning
- Ventilator
- And more...

Along with best quality, we assure the best price and excellent service.

Communication Vehicles: This vehicle is like a moving communications tool. It is enabled with modern communication gadgets, computer equipment, and conference desks. It facilitates portable communication without any discomfort to the communicators



Communication Vehicles



Engineering

The Engineering Department meticulously adheres to the set of standards mandated on the KKK-A-1822F "Federal Specifications for Star-Of-Life."

This certification assures that every ambulance is reliable, high quality, and efficient.

Standards and specifications in building ambulances

1. Engine with YF2 ambulance prep package
2. Electronic automatic transmission with over drive and heavy-duty power steering
3. BOSCH hydraulic package or equal
4. Driver and passenger fully adjustable bucket style seats
5. HDT/RMT or dual door mounted mirrors, bright finish MTD
6. Drivers compartment equipped with OEM entry door panels
7. Accessible and economical compartment room storage (interior and exterior)
8. 220V and 110V shoreline system
9. Programmable multiplex control electrical system
10. LED and halogen light bar, interior and exterior lights
11. Auto-lock rear and side doors
12. Extended fiberglass roof
13. Portable and electronically operated oxygen inlets
14. Medical equipment medical bars, attendant seat and others
15. And as per customer's requirements

Manafeth Engineering Specialization

- Creating a variety of customizable interior configurations to meet requirements
- Concentration on durability, functionality, operation, efficiency and ease of cleaning
- Sleek, aerodynamic designs
- A commitment to continuously improve quality and design flexibility to ensures customer satisfaction



Summary of Vehicles Made

Type I	9 units
Type II	792 units
Type III	27 units
Command Vehicle	28 units
Others	TV van, Fire truck and Rescue

Year	Customer Name	No. of Units	Type
2005	The Saudi Red Crescent	110	Type II
2006	University Hospital, King Abdul-Aziz	1	Type III
2006	Sheikh Rashid Osman	1	Type I
2006	King Fahd Medical City	3	Type III
2007	National Commercial Bank	2	Type III
2007	Saudi National Guard	28	Type II
2008	Al Saad El-Ajou	1	TV Van
2008	Saudi National Guard	19	Type III
2008	Al Arab contracting Co.	2	Type II
2009	Prince Sultan bin Abdul Aziz	1	Type II
2009	Government of Nigeria	1	Type III
2009	General Organization for Military Industries	1	Type II
2009	General Authority of Civil Aviation	28	Driving cars
2009	Ministry of Health	300	Type II
2010	Military Hospital in Riyadh	1	Fire Truck
2010	Military Hospital in Riyadh	1	Fire Truck & Rescue
2010	General Authority of Civil Aviation	3	Type I
2010	Ministry of Defence and Aviation	30	Type II
2010	General Organization for Military Industries	1	Type II
2010	General Authority of Civil Aviation	13	Type II
2011	Ministry of Health	600	Type II
2011	Armed Forces Hospital, Dhahran	2	Type I
2011	Mohammed bin Abdul Aziz Al Rajhi	1	Type II
2011	The National Company for Health Care	1	Type II
2011	General Authority of Civil Aviation	3	Type I
2011	King Saud University - Faculty of Medicine and University Hospitals	2	Type II
2011	Universal Motors Agencies	2	Type II
2011	Saudi Bin ladin group Co.	1	Type I
Total Units Delivered		1159 units	



Technology

that saves lives



Manafeth Ambulance and Handicap Vehicles

Mail : P.O.Box 62952, Riyadh 11595, KSA
Location : King Khalid International Airport
Industrial Area, Riyadh, KSA
Trunk line : +966 1 220 0222
Fax Number : +966 1 220 0333
Email : info@manafeth.com
Web-site : www.manafeth.com